

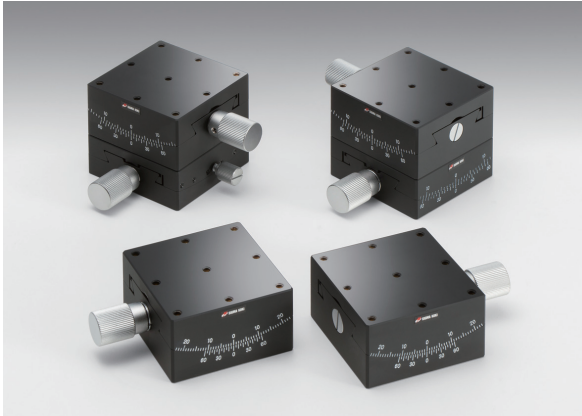
# $\alpha$ Axis Goniometers $\beta$ Axis Goniometers

GOH-60A Stage Size 60 × 60 mm  
GOH-60B

RoHS  
RoHS

Goniometers with dovetail slide and worm gear construction for angular adjustment of heavy loads.

- Vernier scales for reading angular position.
- Locking mechanism clamps dovetail to minimize movement.



### Attention

- ▶ Locking mechanism is operated using thumbscrew on side of stage.

Application Systems

Optics & Optical Coatings

Opto-Mechanics

Bases

Manual Stages

Actuators & Adjusters

MotORIZED Stages

Light Sources & Laser Safety

Index

Guide

X Axis Stages

XY Axis Stages

Z Axis Stages

XZ Axis Stages

XYZ Axis Stages

Rotation Stages

Goniometer

Tilt Stages

Vacuum

Ball Bearing Guide

Crossed Roller

Dovetail

Lapping

V Groove Screw

Others

15 × 15 mm

25 × 25 mm

40 × 40 mm

60 × 60 mm

65 × 65 mm

80 × 80 mm

100 × 100 mm

120 × 120 mm

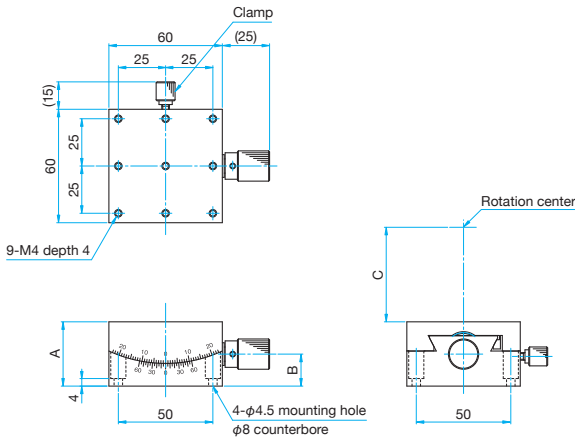
Others

| Specifications                    |                       |                       |              |              |              |              |
|-----------------------------------|-----------------------|-----------------------|--------------|--------------|--------------|--------------|
| Part Number                       | METRIC                | GOH-60A50             | GOH-60A84    | GOH-60A115   | GOH-60B50    | GOH-60B84    |
| (Opposite Model)                  | METRIC                | GOH-60A50R            | GOH-60A84R   | GOH-60A115R  | GOH-60B50R   | GOH-60B84R   |
| Stage Size [mm]                   |                       | 60×60                 | 60×60        | 60×60        | 60×60        | 60×60        |
| Axes of Travel                    |                       | $\alpha$ axis         |              |              | $\beta$ axis |              |
| Rotation Center Height [mm]       |                       | 50±0.1                | 84±0.1       | 115±0.1      | 50±0.1       | 84±0.1       |
| Angle Range [ ° ]                 | (Upper) $\beta$ axis  | —                     | —            | —            | ±20          | ±15          |
|                                   | (Lower) $\alpha$ axis | ±20                   | ±15          | ±10          | ±15          | ±10          |
| Vernier Readable Resolution       |                       | 5'                    | 5'           | 5'           | 5'           | 5'           |
| Travel per Knob Rotation [ ° ]    | (Upper) $\beta$ axis  | —                     | —            | —            | about 1.14   | about 0.76   |
|                                   | (Lower) $\alpha$ axis | about 1.14            | about 0.76   | about 0.58   | about 0.76   | about 0.58   |
| Rotation Center Displacement [mm] |                       | φ0.1 or less          | φ0.1 or less | φ0.1 or less | φ0.1 or less | φ0.1 or less |
| Guide Method                      |                       | Dovetail slide method |              |              |              |              |
| Primary Material                  |                       | Brass                 |              |              |              |              |
| Finish                            |                       | Super black chrome    |              |              |              |              |
| Load Capacity [N]                 |                       | 98 (10.0kgf)          | 98 (10.0kgf) | 98 (10.0kgf) | 98 (10.0kgf) | 98 (10.0kgf) |
| Max. Moment Capacity              | Pitch [N·m]           | 1.6                   | 1.6          | 1.6          | 1.6          | 1.6          |
|                                   | Roll [N·m]            | 2.2                   | 2.2          | 2.2          | 1.6          | 1.6          |
| Moment Stiffness                  | Roll [°/N·cm]         | 0.3                   | 0.3          | 0.3          | —            | —            |
| Parallelism [μm]                  |                       | 50                    | 50           | 50           | 100          | 100          |
| Weight [kg]                       |                       | 1.0                   | 0.9          | 0.85         | 1.9          | 1.75         |



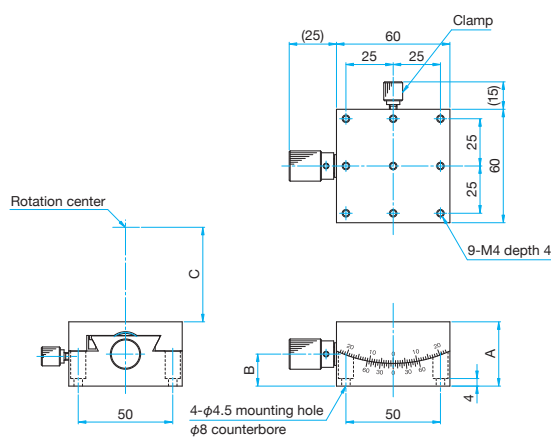
Outline Drawing

**GOH-60A\*\*** Hexagonal socket head cap screw M4x8...4 screws



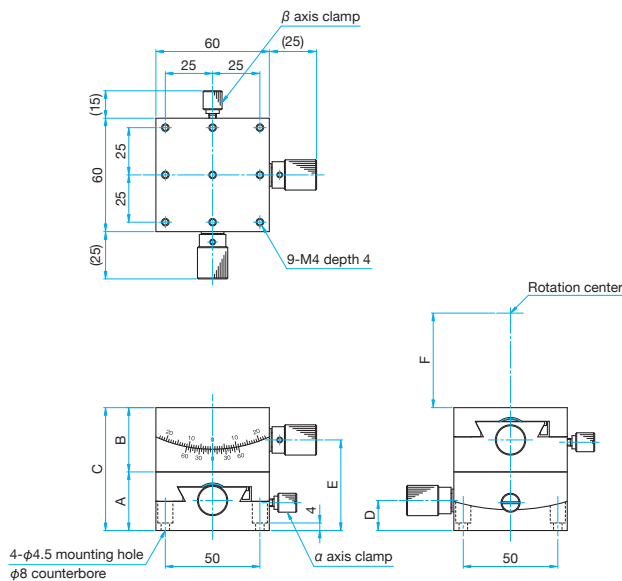
| Part Number | A (mm) | B (mm) | C (mm) |
|-------------|--------|--------|--------|
| GOH-60A50   | 34     | 16.9   | 50     |
| GOH-60A84   | 31     | 15.9   | 84     |
| GOH-60A115  | 24     | 10     | 115    |

**GOH-60A\*\*R** Hexagonal socket head cap screw M4x8...4 screws



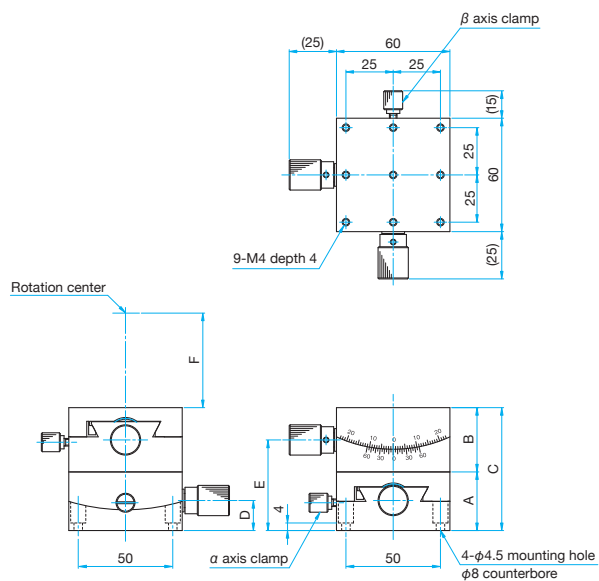
| Part Number | A (mm) | B (mm) | C (mm) |
|-------------|--------|--------|--------|
| GOH-60A50R  | 34     | 16.9   | 50     |
| GOH-60A84R  | 31     | 15.9   | 84     |
| GOH-60A115R | 24     | 10     | 115    |

**GOH-60B\*\*** Hexagonal socket head cap screw M4x8...4 screws



| Part Number | A (mm) | B (mm) | C (mm) | D (mm) | E (mm) | F (mm) |
|-------------|--------|--------|--------|--------|--------|--------|
| GOH-60B50   | 31     | 34     | 65     | 15.9   | 47.9   | 50     |
| GOH-60B84   | 24     | 31     | 55     | 10     | 39.9   | 84     |

**GOH-60B\*\*R** Hexagonal socket head cap screw M4x8...4 screws



| Part Number | A (mm) | B (mm) | C (mm) | D (mm) | E (mm) | F (mm) |
|-------------|--------|--------|--------|--------|--------|--------|
| GOH-60B50R  | 31     | 34     | 65     | 15.9   | 47.9   | 50     |
| GOH-60B84R  | 24     | 31     | 55     | 10     | 39.9   | 84     |

Application Systems

Optics & Optical Coatings

Opto-Mechanics

Bases

Manual Stages

Actuators & Adjusters

MotORIZED Stages

Light Sources & Laser Safety

Index

Guide

X Axis Stages

XY Axis Stages

Z Axis Stages

XZ Axis Stages

XYZ Axis Stages

Rotation Stages

Goniometer

Tilt Stages

Vacuum

Ball Bearing Guide

Crossed Roller

Dovetail

Lapping

V Groove Screw

Others

15 × 15 mm

25 × 25 mm

40 × 40 mm

60 × 60 mm

65 × 65 mm

80 × 80 mm

100 × 100 mm

120 × 120 mm

Others